

POLAMCO MICRO-D BACKSHELLS

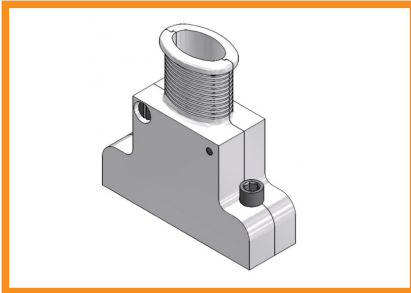
Range of rectangular backshell solutions



- Backshells for individual or overall 360 degree screening options
- Solid or split shells
- Shielded gasket options
- Range of fixing options
- All parts machined from solid material for reliable strength and performance
- Available in top, side 45 or 90 degree outlet options
- Options to use Heat Shrinkable Boots
- Options on low profile, extended length and alternative angles

SMD Series

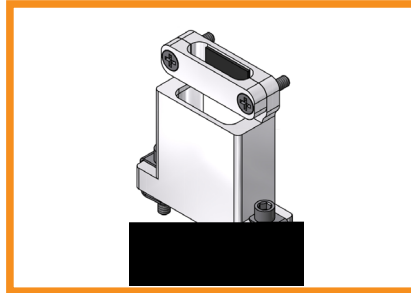
Micro-D



- Added flexibility of split body for accessibility
- Overall screen termination by stainless steel band
- Range of circular or elliptical entry ports to suit cable requirements

MM96 Series

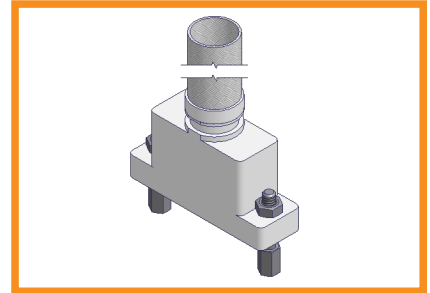
Micro-D



- Mechanical strain relief
- Machined construction for reliability and performance
- Clamp can easily be removed and refitted

70MMTB Series

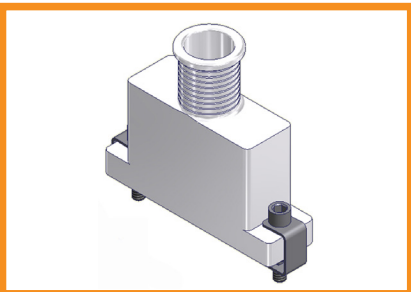
Micro-D



- Backshell with pre-terminated EMC screenbraid
- Magnaform screenbraid termination ensures high reliability with simplicity for the installer
- Alternative braid lengths and material

RBTMM Series

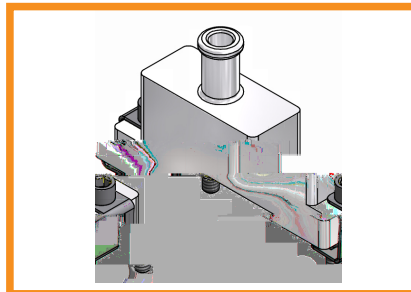
Micro-D



- Overall screen termination by stainless steel band
- Range of circular or elliptical entry ports to suit cable requirements

MBMM Series

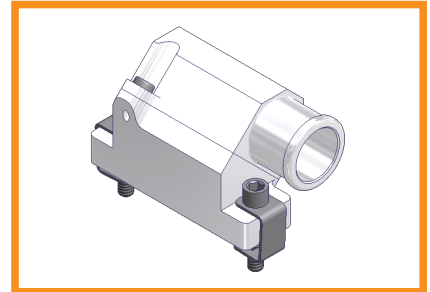
Micro-D



- Overall screen termination by micro band
- Versatile - top, 45° and 90° as well as customer specific angles

MBMM Series

Micro-D - ER45 Option



- 45° Split reversible Micro-D allows four possible configurations
- Split shell for ease of assembly

POLAMCO MICRO-D BACKSHELLS

Part Numbering

Note: All part numbers below represent aluminium alloy with electroless nickel plating. Heat shrinkable boots sold separately.

Polamco PN	TE Internal PN	Description	Polamco PN	TE Internal PN	Description	
MM96 Series			RBMM Series (continued)			
MM96-09-1-C-FSK	EH8914-000	Straight entry micro min strain relief backshell MM96 - 09 - 1 - C - FSK Series Shell Size Material Plating Hardware floating jack screw	RBMM-Z-09-08-1-C-FSK	EH8935-000	Side/45° Entry banding backshell RBMM - Z - 09 - 04 - 1 - C - FSK Series Angle U - Straight Entry Z - Side Entry F - 45° Entry Shell Size Entry Size Material Plating Hardware floating jack screw	
MM96-15-1-C-FSK	EH8915-000		RBMM-Z-15-08-1-C-FSK	EH8936-000		
MM96-21-1-C-FSK	EH8916-000		RBMM-Z-21-08-1-C-FSK	EH8937-000		
MM96-25-1-C-FSK	EH8917-000		RBMM-Z-25-08-1-C-FSK	EH8938-000		
MM96-31-1-C-FSK	EH8918-000		RBMM-Z-31-09-1-C-FSK	EH8939-000		
MM96-37-1-C-FSK	EH8919-000		RBMM-Z-37-09-1-C-FSK	EH8940-000		
MM96-51-1-C-FSK	EH8920-000		RBMM-Z-51-10-1-C-FSK	EH8941-000		
MBMM Series			SMD Series (clam shell)			
MBMM-U-09-04-1-C-FSK	EH8921-000	Micro min micro band backshell MBMM - U - 09 - 04 - 1 - C - FSK Series Angle U - Straight Entry ER45 - 45° offset spot Shell Size Entry Size Material Plating Hardware floating jack screw	SMD-09-05-1-C	EH8942-000		Straight entry banding backshell, split shrouded for standard band termination MM96 - 09 - 1 - C Series Shell Size Material Plating
MBMM-U-15-05-1-C-FSK	EH8922-000		SMD-15-06-1-C	EH8943-000		
MBMM-U-21-06-1-C-FSK	EH8923-000		SMD-21-09-1-C	EH8944-000		
MBMM-U-25-07-1-C-FSK	EH8924-000		SMD-25-11-1-C	EH8945-000		
MBMM-U-31-07-1-C-FSK	EH8925-000		SMD-31-14-1-C	EH8946-000		
MBMM-U-37-08-1-C-FSK	EH8926-000		SMD-37-16-1-C	EH8947-000		
MBMM-U-51-08-1-C-FSK	EH8927-000		SMD-51-16-1-C	EH8948-000		
MBMM Series (ER45 Option)			SMD-100-16-1-C	EH8949-000		
MBMM-ER45-09-04-1-C-FSK	EJ1274-000		70MMTB Series			
MBMM-ER45-15-04-1-C-FSK	EJ1275-000		70MMTB-U-09-08-1-C-FSK	EJ1266-000	Straight entry micro min magnaform adaptor 70MMTB - U - 09 - 04 - 1 - C - FSK Series Angle U - Straight Entry Shell Size Entry Size Material Plating Hardware floating jack screw	
MBMM-ER45-21-04-1-C-FSK	EJ1276-000	70MMTB-U-15-08-1-C-FSK	EJ1267-000			
MBMM-ER45-25-05-1-C-FSK	EJ1277-000	70MMTB-U-21-08-1-C-FSK	EJ1268-000			
MBMM-ER45-31-05-1-C-FSK	EJ1278-000	70MMTB-U-25-08-1-C-FSK	EJ1269-000			
MBMM-ER45-37-05-1-C-FSK	EJ1279-000	70MMTB-U-31-08-1-C-FSK	EJ1270-000			
MBMM-ER45-51-05-1-C-FSK	EJ1280-000	70MMTB-U-37-08-1-C-FSK	EJ1271-000			
MBMM-ER45-100-06-1-C-FSK	EJ1281-000	70MMTB-U-51-08-1-C-FSK	EJ1272-000			
RBMM Series			70MMTB-U-100-08-1-C-FSK	EJ1273-000		
RBMM-U-09-08-1-C-FSK	EH8928-000	Straight entry banding backshell				
RBMM-U-15-08-1-C-FSK	EH8929-000	RBMM - U - 09 - 04 - 1 - C - FSK				
RBMM-U-21-08-1-C-FSK	EH8930-000	Series Angle U - Straight Entry Shell Size Entry Size Material Plating Hardware floating jack screw				
RBMM-U-25-08-1-C-FSK	EH8931-000					
RBMM-U-31-09-1-C-FSK	EH8932-000					
RBMM-U-37-09-1-C-FSK	EH8933-000					
RBMM-U-51-10-1-C-FSK	EH8934-000					

TE Components . . . TE Technology . . . TE Know-how . . .

AMP | Agastat | CII | Hartman | Kilovac | Microdot | Nanonics | Polamco | Raychem | Rochester | DEUTSCH SEACON Phoenix | L.L. Rowe | Phoenix Optix | AFP | SEACON

Get your product to market faster with a smarter, better solution.

© 2016 TE Connectivity Ltd. family of companies. All Rights Reserved.

Polamco, TE Connectivity and the TE connectivity (logo) are trademarks of the TE Connectivity Ltd. family of companies.

Other product or company names mentioned herein may be trademarks of their respective owners.

While TE has made every reasonable effort to ensure the accuracy of the information herein, nothing herein constitutes any guarantee that such information is error-free, or any other representation, warranty or guarantee that the information is accurate, correct, reliable or current. The TE entity issuing this publication reserves the right to make any adjustments to the information contained herein at any time without notice. All implied warranties regarding the information contained herein, including, but not limited to, any implied warranties of merchantability or fitness for a particular purpose are expressly disclaimed. The dimensions herein are for reference purposes only and are subject to change without notice. Specifications are subject to change without notice.

Consult TE for the latest dimensions, design specification, or additional available options in finishes, materials, and configurations.

