



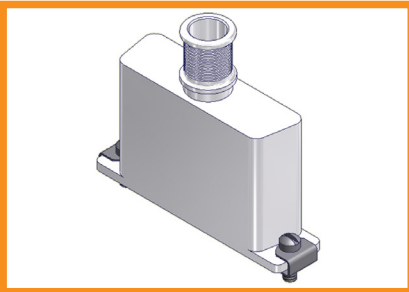
POLAMCO D-SUB BACKSHELLS

Range of rectangular backshell solutions

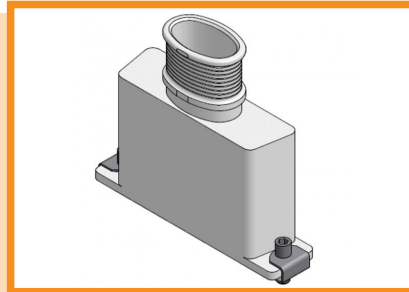
- Backshells for individual or overall 360 degree screening options
- Solid or split shells
- Shielded gasket options
- Range of fixing options
- All parts machined from solid material for reliable strength and performance
- Available in top, side 45 or 90 degree outlet options
- Options to use Heat Shrinkable Boots
- Options on low profile, extended length and alternative angles

D-BT Series - Circular & Elliptical Options

D-Sub



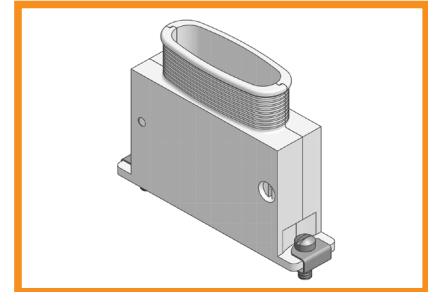
- Overall screen termination by band
- Range of circular or elliptical entry ports to suit entry requirements
- RFI comb option provides individual screen terminations



- With or without heat shrink boot groove
- Choice of chamber lengths available
- Bands ordered separately

DSF Series

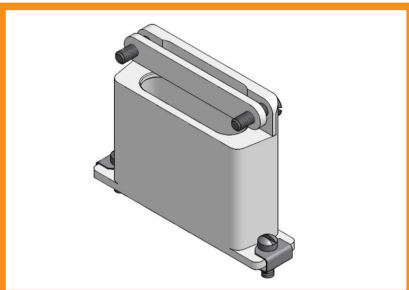
D-Sub



- As DBT Series but with added flexibility of split body for accessibility.

D96 Series

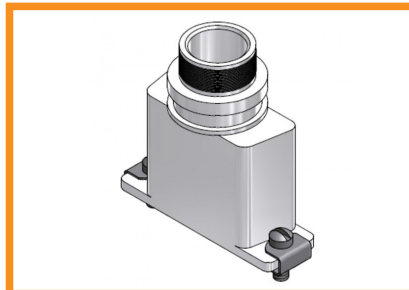
D-Sub



- Mechanical strain relief
- Machined for high strength
- Removable clamp

D60 Series

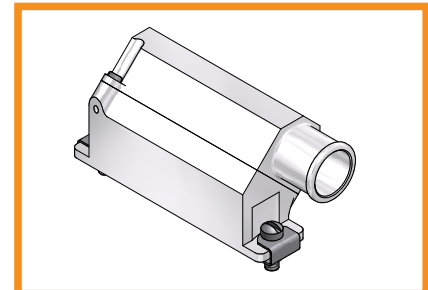
D-Sub



- Overall screen termination by memory ring
- Low profile termination area
- Heat shrink boot groove
- Choice of chamber length available
- Single or double braid option

DHB Series

D-Sub



- Overall screen termination by band
- Offset options to accommodate custom assemblies
- Split shell for ease of assembly

POLAMCO D-SUB BACKSHELLS

Part Numbering

Note: All part numbers below represent aluminium alloy with electroless nickel plating. Heat shrinkable boots sold separately.

Polamco PN	TE Internal PN	Description	Polamco PN	TE Internal PN	Description
D96 Series			D09HB Series		
D09-1-96-1-C-T-FSK	EH9180-000	Straight entry strain relief backshell D25 - 1 - 96 - 1 - C - T - FSK Shell Size Angle 1 - straight entry Termination Style Material Plating Tab Option Hardware floating jack screw	D09HB-3D45-MB-06-1-C-T-L20-FSK	EH9203-000	Two part 90° offset spout micro band backshell D25HB - 3D45 - MB - 06 - 1 - C - T - L20 - FSK Shell Size Angle 90° dbl orientation 45° spout offset Termination Style micro band Entry Size Material Plating Tab Option Body Height length in mm Hardware floating jack screw
D15-1-96-1-C-T-FSK	EH9181-000		D15HB-3D45-MB-06-1-C-T-L20-FSK	EH9204-000	
D25-1-96-1-C-T-FSK	EH9182-000		D25HB-3D45-MB-06-1-C-T-L20-FSK	EH9205-000	
D37-1-96-1-C-T-FSK	EH9183-000		D37HB-3D45-MB-06-1-C-T-L20-FSK	EH9206-000	
D50-1-96-1-C-T-FSK	EH9184-000		D50HB-3D45-MB-08-1-C-T-L20-FSK	EH9207-000	
			D104HB-3D45-MB-09-1-C-T-L20-FSK	EH9208-000	
D-BT Series			D60 Series		
D09-1-BT-06-1-C-T-FSK	EH9185-000	Straight entry banding backshell w/boot groove D25 - 1 - BT - 12E - 1 - C - T - FSK Shell Size Angle 1 - straight entry Termination Style Entry Size Elliptical Entry omit for circular Material Plating Tab Option Hardware floating jack screw	D09-1-60-04-1-C-T-A-FSK	EH9209-000	Straight entry memory ring backshell D25 - 1 - 60 - 06 - 1 - C - T - A - FSK T - straight entry Shell Size Angle Termination Style Entry Size Material Plating Tab Option Memory Ring Hardware floating jack screw
D15-1-BT-06-1-C-T-FSK	EH9186-000		D15-1-60-05-1-C-T-A-FSK	EH9210-000	
D25-1-BT-06-1-C-T-FSK	EH9187-000		D25-1-60-06-1-C-T-A-FSK	EH9211-000	
D37-1-BT-06-1-C-T-FSK	EH9188-000		D37-1-60-07-1-C-T-A-FSK	EH9212-000	
D50-1-BT-08-1-C-T-FSK	EH9189-000		D50-1-60-07-1-C-T-A-FSK	EH9213-000	
D104-1-BT-09-1-C-T-FSK	EH9190-000				
Elliptical Entry			DBT Series + RFI comb		
D09-1-BT-08E-1-C-T-FSK	EH9191-000	Straight entry banding backshell, split flange mount DSF25 - T - BT - 12E - 1 - C - T - FSK Shell Size Angle T - straight entry Termination Style Entry Size Elliptical Entry omit for circular Material Plating Tab Option Hardware floating jack screw	D09H-1-BT-06-1-C-T-FSK	EH9214-000	Straight entry banding backshell w/boot groove & RFI comb D25H - 1 - BT - 12E - 1 - C - T - FSK Shell Size Angle 1 - straight entry Termination Style Entry Size Elliptical Entry omit for circular Material Plating Tab Option Hardware floating jack screw
D15-1-BT-10E-1-C-T-FSK	EH9192-000		D15H-1-BT-06-1-C-T-FSK	EH9215-000	
D25-1-BT-12E-1-C-T-FSK	EH9193-000		D25H-1-BT-06-1-C-T-FSK	EH9216-000	
D37-1-BT-15E-1-C-T-FSK	EH9194-000		D37H-1-BT-06-1-C-T-FSK	EH9217-000	
D50-1-BT-16E-1-C-T-FSK	EH9195-000		D50H-1-BT-08-1-C-T-FSK	EH9218-000	
D104-1-BT-18E-1-C-T-FSK	EH9196-000		D104H-1-BT-09-1-C-T-FSK	EH9219-000	
DSF Series			Elliptical Entry		
DSF09-T-BT-08E-1-C-T-FSK	EH9197-000	Straight entry banding backshell, split flange mount DSF25 - T - BT - 12E - 1 - C - T - FSK Shell Size Angle T - straight entry Termination Style Entry Size Elliptical Entry omit for circular Material Plating Tab Option Hardware floating jack screw	D09H-1-BT-08E-1-C-T-FSK	EH9220-000	Elliptical Entry omit for circular Material Plating Tab Option Hardware floating jack screw
DSF15-T-BT-10E-1-C-T-FSK	EH9198-000		D15H-1-BT-10E-1-C-T-FSK	EH9221-000	
DSF25-T-BT-12E-1-C-T-FSK	EH9199-000		D25H-1-BT-12E-1-C-T-FSK	EH9222-000	
DSF37-T-BT-15E-1-C-T-FSK	EH9200-000		D37H-1-BT-15E-1-C-T-FSK	EH9223-000	
DSF50-T-BT-16E-1-C-T-FSK	EH9201-000		D50H-1-BT-16E-1-C-T-FSK	EH9224-000	
DSF104-T-BT-18E-1-C-T-FSK	EH9202-000		D104H-1-BT-18E-1-C-T-FSK	EH9225-000	

TE Components . . . TE Technology . . . TE Know-how . . .

AMP | Agastat | CII | Hartman | Kilovac | Microdot | Nanonics | Polamco | Raychem | Rochester | DEUTSCH SEACON Phoenix | L.L. Rowe | Phoenix Optix | AFP | SEACON

Get your product to market faster with a smarter, better solution.

© 2016 TE Connectivity Ltd. family of companies. All Rights Reserved.

Polamco, TE Connectivity and the TE connectivity (logo) are trademarks of the TE Connectivity Ltd. family of companies.

Other product or company names mentioned herein may be trademarks of their respective owners.

While TE has made every reasonable effort to ensure the accuracy of the information herein, nothing herein constitutes any guarantee that such information is error-free, or any other representation, warranty or guarantee that the information is accurate, correct, reliable or current. The TE entity issuing this publication reserves the right to make any adjustments to the information contained herein at any time without notice. All implied warranties regarding the information contained herein, including, but not limited to, any implied warranties of merchantability or fitness for a particular purpose are expressly disclaimed. The dimensions herein are for reference purposes only and are subject to change without notice. Specifications are subject to change without notice.

Consult TE for the latest dimensions, design specification, or additional available options in finishes, materials, and configurations.

